



FIRE PROTECTION LINE



CONTACT: SALES@SANFLOTEK.COM

SANFORD, FLORIDA - USA

PHONE: (786) 719-5200

WWW.SANFLOTEK.COM



300PSI GROOVED BUTTERFLY VALVE, GEAR OPERATED WITH TAMPER SWITCH

MODEL NO. SFL-BV-300-G

SIZES 2" TO 12"

Approvals: UL and FM

Conforms to ANSI/AWWA C606



350PSI GROOVED SWING CHECK VALVE

MODEL NO. SFL-SC-350-G

SIZES 2" TO 8"

Approvals: UL and FM

End Connections Available: Gr x Gr, Fl x Fl, Gr x Fl

Installation: Only Horizontal

Conforms to AWWA C606



**300PSI RESILIENT SEAT
OUTSIDE SCREW & YOLK (OS&Y)
GATE VALVE**

MODEL NO. SFL-OSY-300-F

SIZES 2" TO 12"

Approvals: UL and FM
End Connections Available: Fl x Fl,
Gr x Gr, Gr x Fl, Mech Joint
Conforms to AWWA C515



**300PSI RESILIENT SEAT NON
RISING STEM (NRS) GATE VALVE**

MODEL NO. SFL-NRS-300-F

SIZES 2" TO 12"

Approvals: UL and FM
End Connections Available: Fl x Fl,
Gr x Gr, Gr x Fl, Mech Joint
Conforms to AWWA C515



**250PSI DRY BARREL
FIRE HYDRANT**

MODEL NO. SFL-DBH-250-F

**BASE SIZE 6", 2 X 2.5" HOSE
OUTLETS, 1 X 4.5" PUMPER
OUTLET**

Approvals: UL and FM
End Connections: Flanged
or Mechanical Joint
Conforms to ANSI/AWWA C502



**250 PSI WET BARREL FIRE
HYDRANT, FLANGED END**

MODEL: SFL-WBH-250-F

SIZES 6"

Approvals: UL and FM
BASE SIZE: 6"
HOSE OUTLETS: 2.5" x 2"
PUMPER OUTLET: 4.5"



**300PSI WAFER BUTTERFLY
VALVE, GEAR OPERATED WITH
TAMPER SWITCH**

MODEL NO. SFL-BV-300-W

SIZES 2" TO 12"

Approvals: UL and FM
Conforms to ANSI/AWWA C606



**300PSI FLANGED ENDS
SWING CHECK VALVE**

MODEL NO. SFL-SC-300-F

SIZES 2" TO 12"

Approvals: UL and FM
Installation: Horizontal and Vertical
Conforms to AWWA C508



VERTICAL INDICATOR POST

MODEL NO. SFL-IPV

Compatible with NRS Valve sizes 4" to 12"
Approvals: UL and FM
12" Outer Diameter Flange



WALL INDICATOR POST

MODEL NO. SFL-IPW

Compatible with NRS Valve sizes 4" to 12"
Approvals: UL and FM
12" Outer Diameter Flange



**200PSI RESILIENT SEAT
OUTSIDE SCREW & YOLK (OS&Y)
GATE VALVE**

MODEL NO. SFL-OSY-200-F

SIZES 2" TO 16"

Approvals: UL and FM
(14 & 16" FM Only)
End Connections Available:
Fl x Fl, Gr x Gr, Gr x Fl
Conforms to AWWA C515



**200PSI RESILIENT SEAT NON
RISING STEM (NRS) GATE VALVE**

MODEL NO. SFL-NRS-200-F

SIZES 2" TO 12"

Approvals: UL and FM
Conforms to ANSI/AWWA C606



**WATER FLOW DETECTOR
(VANE TYPE)**

MODEL: SFL-WFD-VT

SIZES 2" TO 8"

Approvals: UL and FM
Indoor / Outdoor – vertical
or horizontal installation



**TEST & DRAIN VALVE (ANGLE
PRV AND TEST & DRAIN VALVE)
STRAIGHT**

**MODEL: SFL-TD-PRV-A
AND MODEL: SFL-TD-300-S**

Approvals: UL and FM
Size Range from 3/4" TO 2"



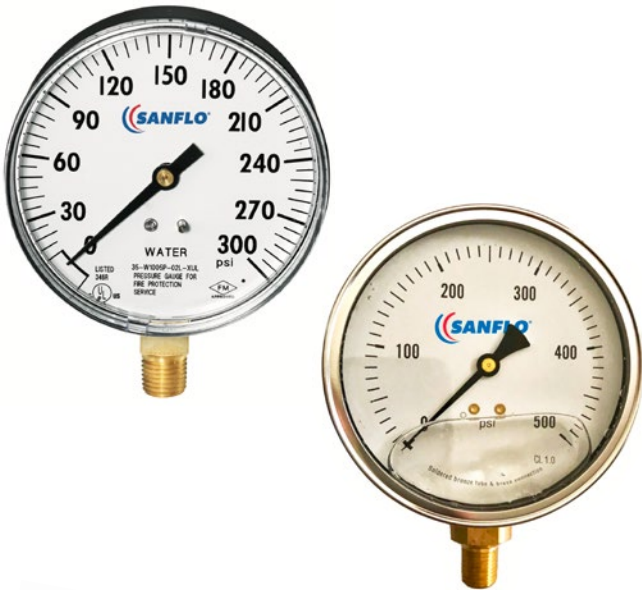
ALARM CHECK VALVE WITH RETARDING CHAMBER AND WATER MOTOR ALARM GONG

**MODEL: SFL-ACV, SFL-RET,
AND SFL-WMAG**

SIZES 3" TO 8"

Approval: UL and FM

End connection: Flange X Flange;
Flange X Groove; Groove X Groove



FIRE SPRINKLER SERVICE GAUGE

MODEL SFL-GAU-300-3.5

COMMERCIAL PRESSURE GAUGE: GLYCERIN FILLED

**SFL-GAU-GLYC-4 WITH ¼" CONNECTION /
SFL-GAU-GLYC-4B WITH ½" CONNECTION**

Approvals: UL and FM

For Sprinkler Gauge only



INTEGRATED MANIFOLD ASSEMBLY FOR FLOOR CONTROL STATION

MODEL: SFL-IMA-300

SIZES 2" TO 8"

Approvals: Individual
components UL and FM