

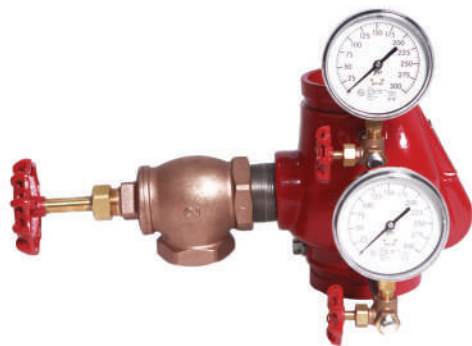


350PSI RISER CHECK VALVE

SFL-SC-350-F / SFL-SC-350-G / SFL-SC-350-FG / SFL-SC-350-GF



**STANDARD VERSION
SIZES 2" TO 8"**



**SHOTGUN VERSION
SIZES 2" TO 8"**

GENERAL DESCRIPTION

SANFLO Riser Check Valves are designed only for fire protection services, primarily in commercial grooved end pipe connections. Also referred to as non-return, retention, or one-way valve, a check valve is designed to only allow the flow of water in one direction. A swing type clapper is found inside the valve which is spring loaded preventing water from flowing in a return direction. Able to install in a vertical (upward flow only) or horizontal position. The SANFLO Riser Check Valve may also be used in a "Shotgun" style, incorporating a trim kit, providing a more compact and economical alternative to a wet alarm check valve system. In place of a water motor alarm gong, the "Shotgun" style requires an approved water flow switch (not included).

END CONNECTIONS

FL x FL / GR x GR / FL x GR / GR x FL

KEY TECHNICAL FEATURES

Conforms to: ASTM A126 CLASS B RATING

Max working pressure: 350PSI (24 bar)

Approvals: UL and FM

Max testing pressure: 700PSI (48bar)

Grooved ends ANSI/AWWA C606

Min/max working temperature: 32°F to 212°F (0°C to 100°C)

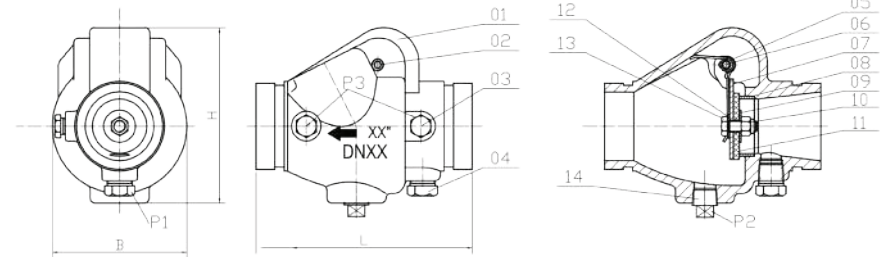
Conforms to UL312 and ULC/ORD-C312 and FM CLASS 1210 (non-shock cold working pressure)

Coating: fusion bonded epoxy interior and exterior conforming to AWWA C550

Includes two test plugs

Certified lead free to: NSF-61 & ANSI-372

DIA.	B	H	L
	mm	mm	mm
2" (50mm)	100	131	169
2.5" (65mm)	104	141	181
3" (80mm)	128	166	198
4" (100mm)	151	195	214
6" (150mm)	220	252	270
8" (200mm)	279	303	325





350PSI RISER CHECK VALVE

SFL-SC-350-F / SFL-SC-350-G / SFL-SC-350-FG / SFL-SC-350-GF

CARE AND MAINTENANCE

No regular maintenance is required, however it is advisable to annually inspect and verify proper operation. The frequency of testing, inspections, and/or maintenance is the sole responsibility of the end user. Only qualified fire protection integrators should perform any required maintenance involving the valve.

ORDERING INFORMATION RISER CHECK

Specify model **SFL-SC-350-F / SFL-SC-350-G / SFL-SC-350-FG / SFL-SC-350-GF** and include valve size (diameter)
2" (50mm) 2.5" (65mm) 3" (80mm) 4" (100mm) 6" (150mm) 8" (200mm)

ORDERING INFORMATION TRIM KIT

Valve diameter 2", **SFL-RCV-T1**
Valve diameter 2.5" - 3", **SFL-RCV-T2**
Valve diameter 4" - 8", **SFL-RCV-T3**

SANFLO PRODUCT WARRANTY

One (1) year from original sale date. Sanflo guarantees to repair or replace any products deemed to be defective in material or fabrication. Visit our website for full warranty details.

MATERIAL SPECIFICATIONS

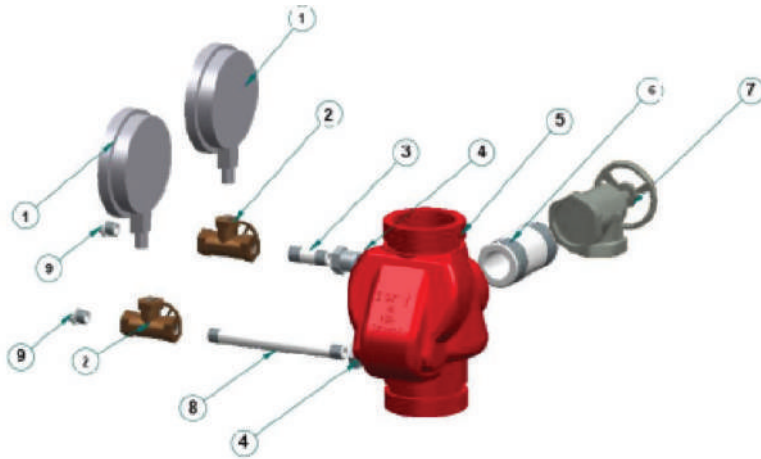
ITEM	PART	MATERIAL & SPEC
1	Body	Ductile Iron, A536 65-45-12
2	Hinge Pin	Stainless Steel, AISI 304
3	Torsion Spring	Stainless Steel, AISI 304
4	Seat Ring	Bass C95400
5	Lock Nut	Stainless Steel, AISI 304
6	Gasket	Rubber, EPDM
7	Clapper Facing Disc	Rubber, EPDM
8	Clapper	Stainless Steel, AISI 304
9	0.5 NPT Plug	Malleable Iron
10	Bolt	Stainless Steel, AISI 316



350PSI RISER CHECK VALVE

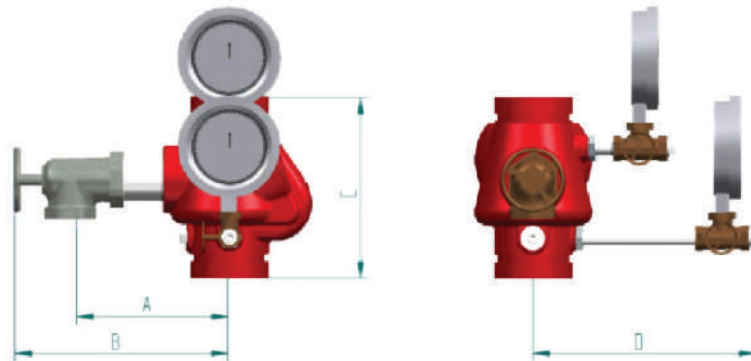
SFL-SC-350-F / SFL-SC-350-G / SFL-SC-350-FG / SFL-SC-350-GF

TRIM KIT ARRANGEMENT FOR RISER SHOTGUN CHECK VALVE



NO.	COMPONENT	QTY.
1	3.5" 300psi / 2000 kPa Water Pressure Guage	2
2	1/4" 3-way Guage Test Valve	2
3	Nipple 1/4" x 2"	1
4	1/4" Plug	1
5	Riser Check Valve	1
6	Close Nipple 1", 1.25", or 2"	1
7	1", 1.25", or 2" Angle Valve	1
8	Nipple 1/4" x 5 1/2"	1
9	1/4" Plug	2

*Angle Valve dimension will vary depending on size of Riser Check Valve. 1" Angle valve for 2" Check. 1.25" Angle valve for 2.5" to 3" Check. 2" Angle valve for 4" to 8" Check



DIA.	A	B	C	D
	mm	mm	mm	mm
2" (50mm)	160	260	170	190
2.5" (65mm)	173	273	184	197
3" (80mm)	189	289	198	204
4" (100mm)	214	314	214	218
6" (150mm)	265	365	324	243
8" (200mm)	339	439	371	270